

SINGLE RUN 307 - TIMBER

Capacity:

- Maximum door weight: 2000kg.
- Maximum door height: 6000mm.
- Door thickness: 55mm - 70mm.

Application:

A general purpose top hung track system for straight sliding timber doors in commercial or industrial situations. Industrial door gear suitable for single track lines where the supporting structure is sufficient to bear the total door and hardware weight.

Components:

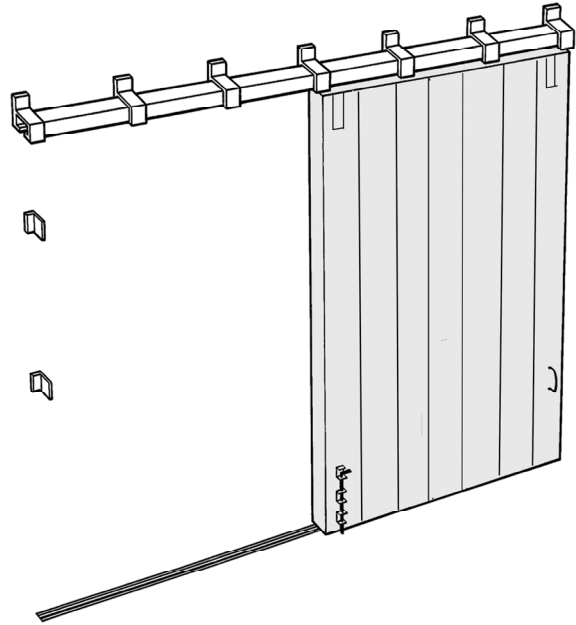
- Track - galvanised (307). Available in 2m lengths.
- Brackets - single run, face fixing (1/307).
- Brackets - single run, soffit fixing (3/307).
- Brackets - single run, soffit fixing, parallel ear (4/307).
- Hangers - wooden doors, 4-wheel, apron fixing, steel (53FJ).
- Guides - wooden doors (102½/97).
- Guides - wooden doors (105R/97).
- Guide - wooden doors (106R/97).
- Channel - galvanised steel (100). Available in 2m, 2.5m and 3m lengths.
- Channel - galvanised steel (97). Available in 2m, 2.5m and 3m lengths.
- Bottom Guide Rail - (299). Available in 2m lengths.

Optional Extras:

- Flush Pulls.
- Flush Bolts.
- Handles.
- Stops.

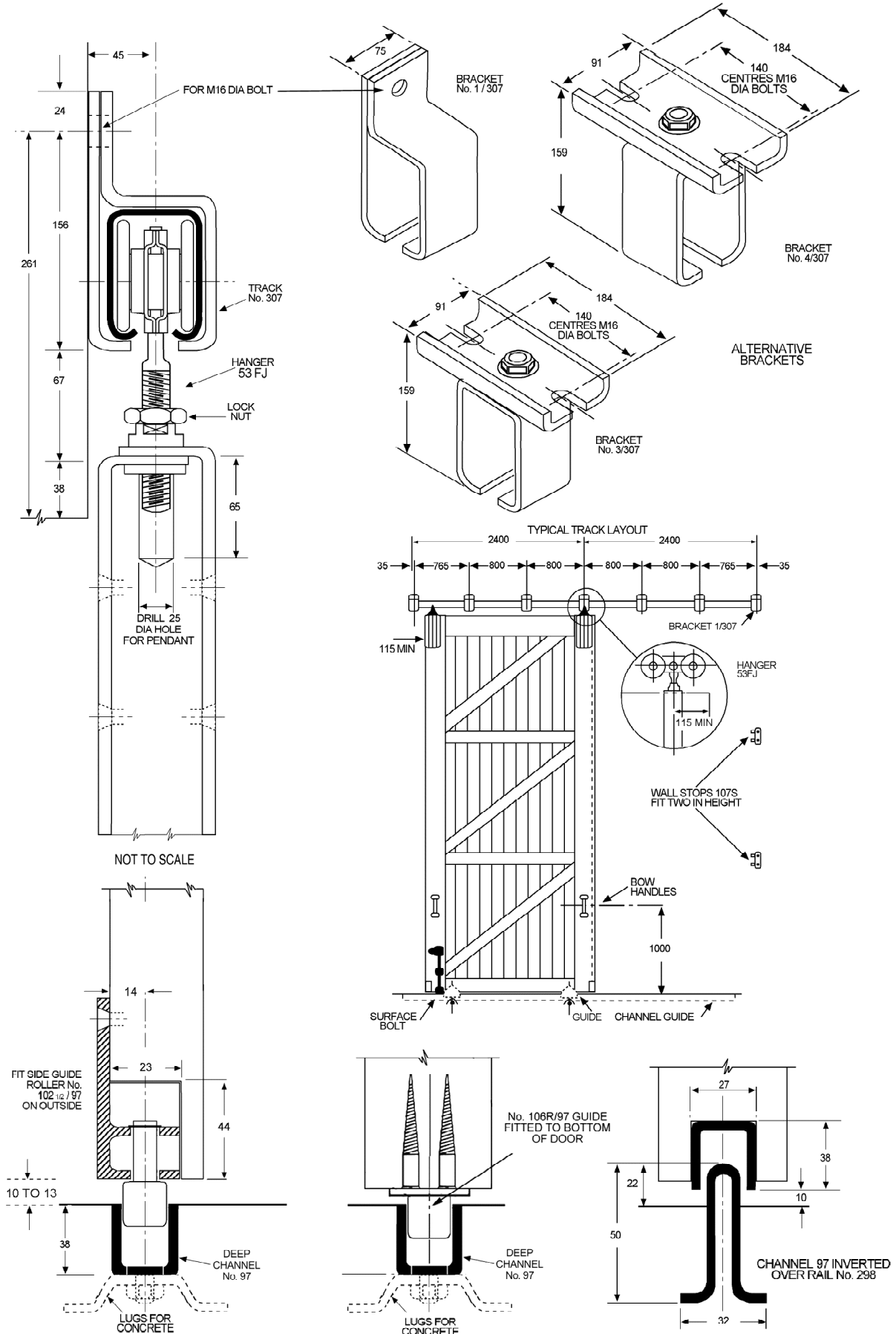
Please note:

- Brackets to be fixed every 700mm - 900mm maximum and at track joints.
- Two hangers required per door.
- Please refer to component section for component options and technical detail.


EXT
INT


SINGLE RUN 307 - TIMBER

SINGLE RUN 307 - TIMBER



SINGLE RUN 307 - METAL

Capacity:

- Maximum door weight: 2000kg.
- Maximum door height: 6000mm.
- Door thickness: 55mm - 70mm.

Application:

A general purpose top hung track system for straight sliding metal doors in commercial or industrial situations. Industrial door gear suitable for single track lines where the supporting structure is sufficient to bear the total door and hardware weight.

Components:

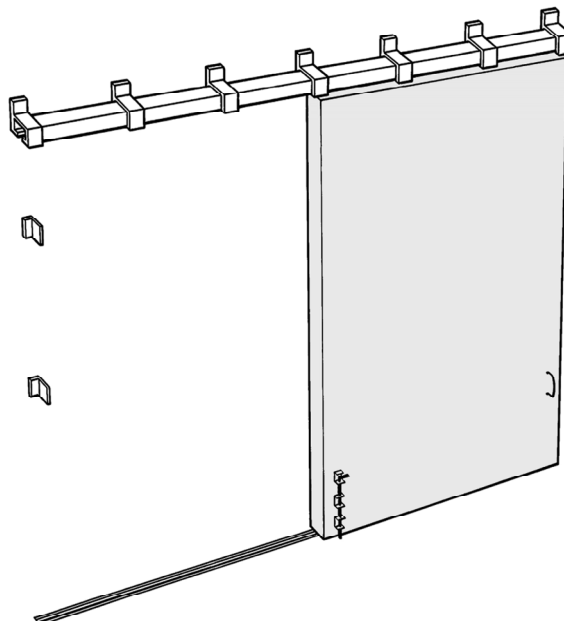
- Track - galvanised (307). Available in 2m lengths.
- Brackets - single run, face fixing (1/307).
- Brackets - single run, soffit fixing (3/307).
- Brackets - single run, soffit fixing, parallel ear (4/307).
- Hangers - metal doors, 4-wheel, bolt-fix, steel (56FJ).
- Guides - metal doors (104P/97).
- Guides - metal doors (106R/97).
- Channel - galvanised steel (100). Available in 2m, 2.5m and 3m lengths.
- Channel - galvanised steel (97). Available in 2m, 2.5m and 3m lengths.
- Bottom Guide Rail - (299). Available in 2m lengths.

Optional Extras:

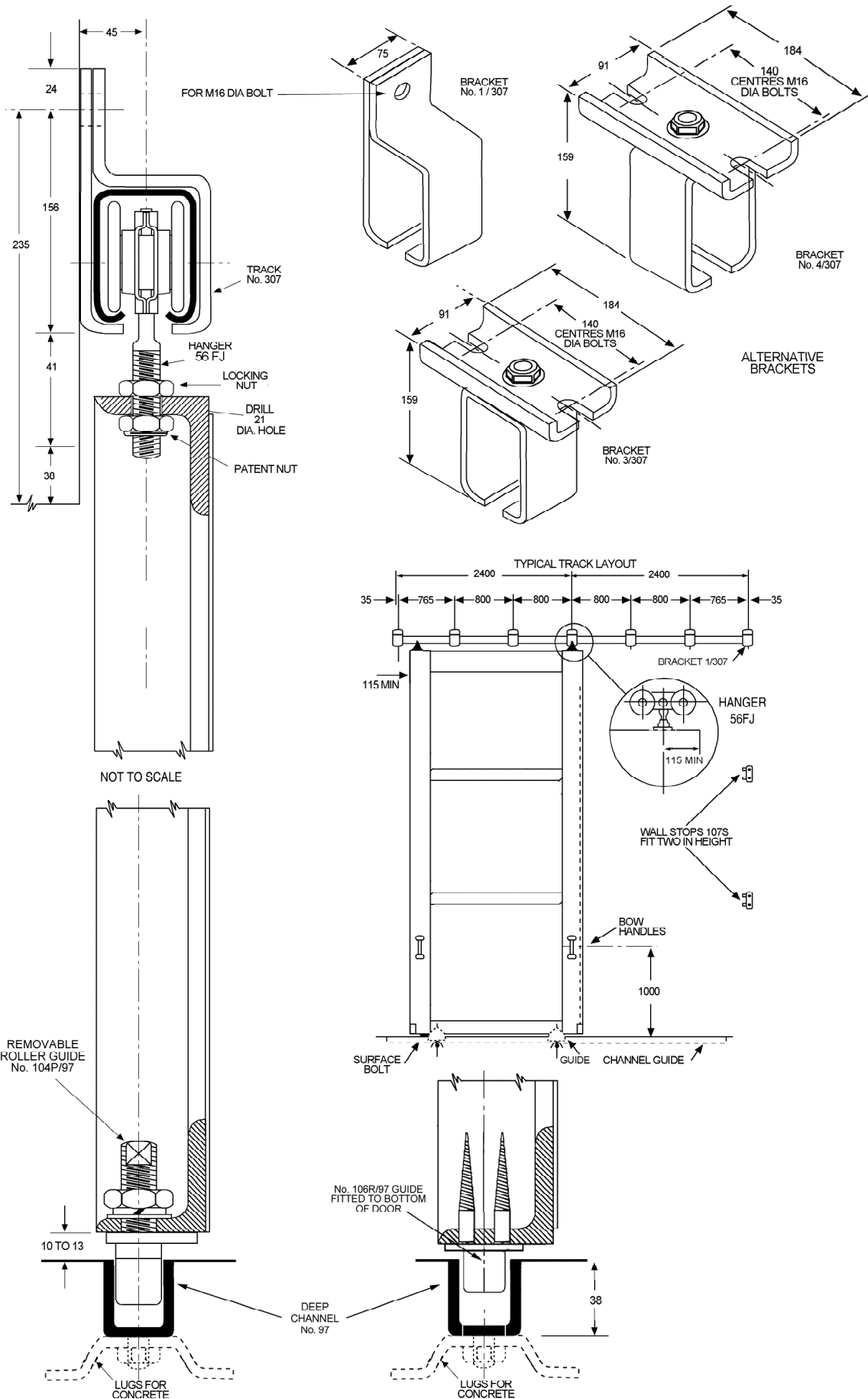
- Flush Pulls.
- Flush Bolts.
- Handles.
- Stops.

Please note:

- Brackets to be fixed every 700mm - 900mm maximum and at track joints.
- Two hangers required per door.
- Please refer to component section for component options and technical detail.


EXT
INT


SINGLE RUN 307 - METAL



SINGLE RUN 307 - METAL

DOUBLE RUN 307 - TIMBER

Capacity:

- Maximum door weight: 2000kg.
- Maximum door height: 6000mm.
- Door thickness: 55mm - 70mm.

Application:

A general purpose top hung track system for straight sliding timber doors in commercial or industrial situations. Industrial door gear suitable for multiple track lines where the supporting structure is sufficient to bear the total door and hardware weight.

Components:

- Track - galvanised (307). Available in 2m lengths.
- Brackets, single run - soffit fixing (3/307).
- Brackets, single run - soffit fixing, parallel ear (4/307).
- Hangers - wooden doors, 4-wheel, apron fixing, steel (53FJ).
- Guides - wooden doors (102½/97).
- Guides - wooden doors (105R/97).
- Guides - wooden doors (106R/97).
- Channel - galvanised steel (100). Available in 2m, 2.5m and 3m lengths.
- Channel - galvanised steel (97). Available in 2m, 2.5m and 3m lengths.
- Bottom Guide Rail - (299). Available in 2m lengths.

Optional Extras:

- Flush Pulls.
- Flush Bolts.
- Handles.
- Stops.

Please note:

- Brackets to be fixed every 700mm - 900mm maximum and at track joints.
- Two hangers required per door.
- Please refer to component section for component options and technical detail.



DOUBLE RUN 307 - TIMBER

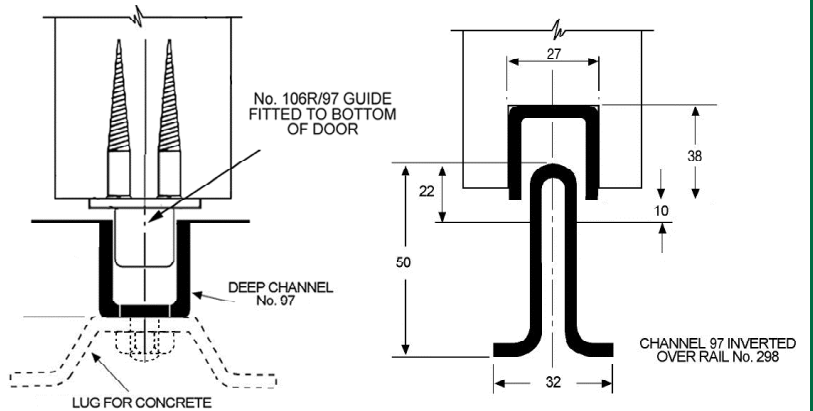
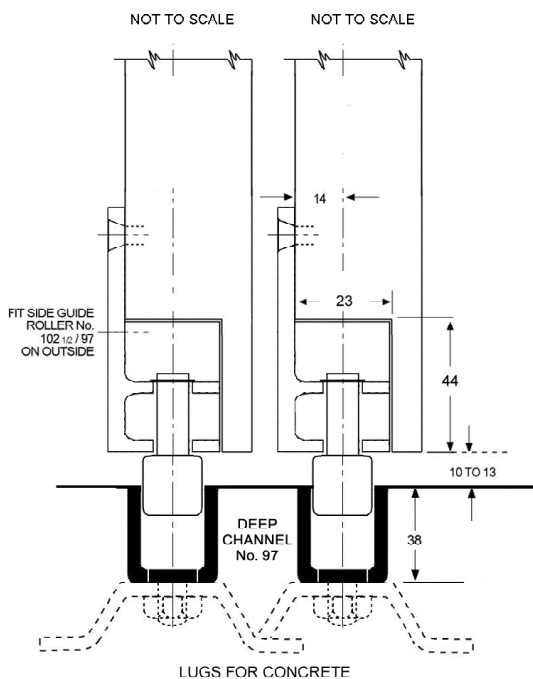
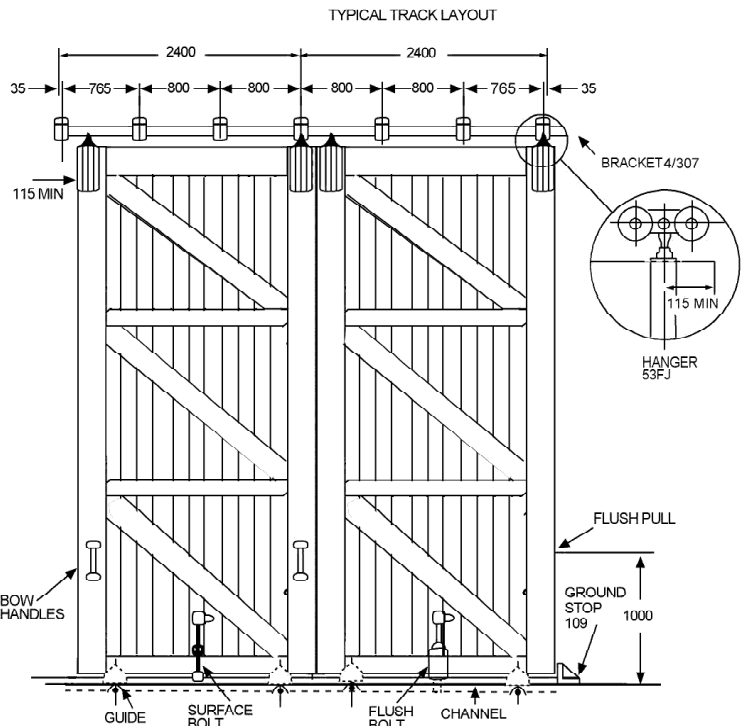
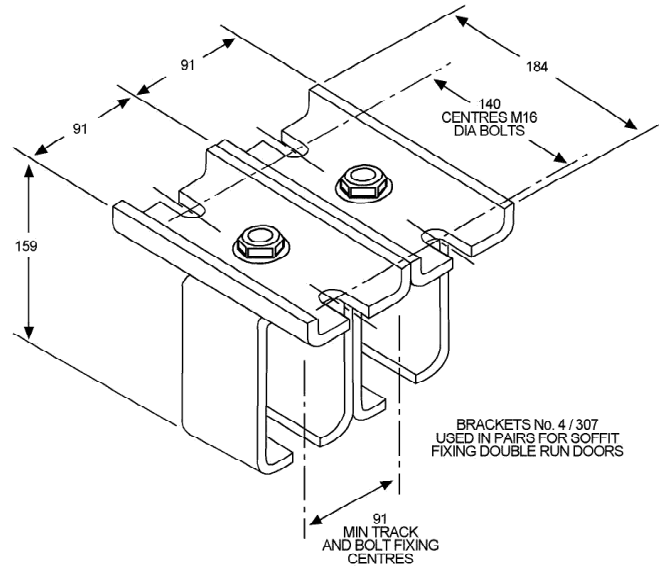
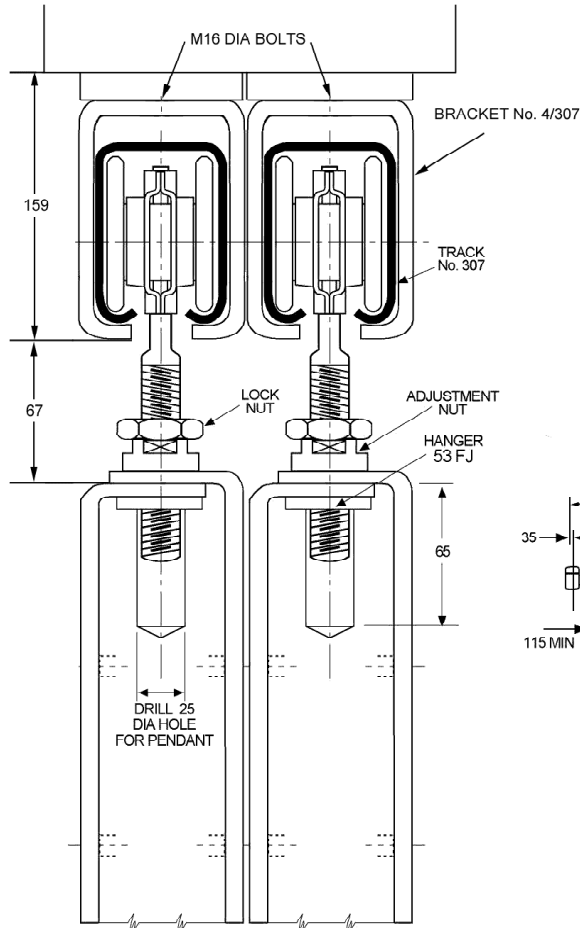
EXT

INT



DOUBLE RUN 307 - TIMBER

DOUBLE RUN 307 - TIMBER



DOUBLE RUN 307 - METAL

Capacity:

- Maximum door weight: 2000kg.
- Maximum door height: 6000mm.
- Door thickness: 55mm - 70mm.

Application:

A general purpose top hung track system for straight sliding metal doors in commercial or industrial situations. Industrial door gear suitable for multiple track lines where the supporting structure is sufficient to bear the total door and hardware weight.

Components:

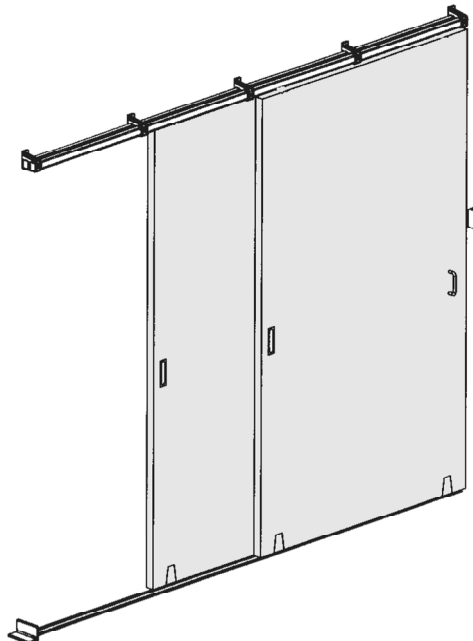
- Track - galvanised (307). Available in 2m lengths.
- Brackets - single run, soffit fixing (3/307).
- Brackets - single run, soffit fixing, parallel ear (4/307).
- Hangers - metal doors, 4-wheel, bolt-fix, steel (56FJ).
- Guides - metal doors (104P/97).
- Guides - metal doors (106R/97).
- Channel - galvanised steel (100). Available in 2m, 2.5m and 3m lengths.
- Channel - galvanised steel (97). Available in 2m, 2.5m and 3m lengths.
- Bottom Guide Rail - (299). Available in 2m lengths.

Optional Extras:

- Flush Pulls.
- Flush Bolts.
- Handles.
- Stops.

Please note:

- Brackets to be fixed every 700mm - 900mm maximum and at track joints.
- Two hangers required per door.
- Please refer to component section for component options and technical detail.


EXT
INT


DOUBLE RUN 307 - METAL

DOUBLE RUN 307 - METAL

